



Ctrl+Click the images to the right for a downloadable, screening-themed **Valentine** image. →



Several Screend participants had set goals ending Dec 31, 2022. **CONGRATULATIONS** to the following teams for meeting or exceeding their goals: ★ **South Central Health**—Wishek, Gackle, Napoleon and Kulm Clinics; and ★ **UND Center for Family Medicine**—Bismarck.

Let the planning begin! Please consider participating in the [2023 Turn ND Blue Photo Contest](#) and encourage others in your community to submit too!



There are categories for hospitals, direct patient care organizations, non-medical worksites, and educational and community groups.



Why is colorectal cancer screening important? Click [here](#) for Dan Beach's response, South Central Health.

Featured Resource

Take a look at this great idea for Colorectal Cancer Awareness Month! *Remember, imitation is the sincerest form of flattery.*

[2023 Battle of the Buns!](#)



Dashboard

Milestones: (4 cohorts – all different start dates. The Copper, Bronze and Silver milestones are intended to be achievable in program year one.)

COPPER

- Southwest Healthcare, Bowman
- Grafton Family Clinic
- Park River Family Clinic
- St. Luke's Medical Center, Crosby

BRONZE

- Standing Rock Service Unit, Fort Yates
- First Care Health Center, Park River

SILVER

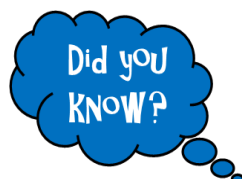
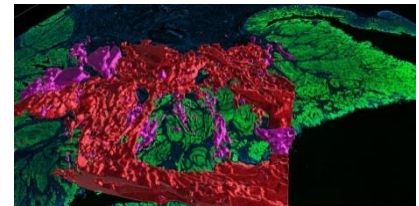
- Quentin N. Burdick Memorial Health Care Facility, Belcourt
- Spirit Lake Health Center, Devils Lake
- Towner County Medical Center, Cando
- CliniCare, Cavalier
- UND Center for Family Medicine, Bismarck
- Wishek Clinic
- Napoleon Clinic
- Gackle Clinic
- Kulm Clinic
- Elgin Community Clinic
- Glen Ullin Family Medical Clinic
- Richardton Clinic

News, etc.

An Unprecedented Look at Colorectal Cancer

by Catherine Caruso, Harvard Medical School

Researchers are building detailed maps of colorectal cancer to better understand the dynamics of the disease. In the United States, turning 45 brings with it a rather unpleasant rite of passage: the beginning of regular colonoscopies...now a team at Harvard Medical School has combined histology with cutting-edge single-cell imaging technologies to create large-scale 2D and 3D spatial maps of colorectal cancer. The maps, described in *Cell*, layer extensive molecular information on top of histological features to provide new information about the structure of the cancer, as well as how it forms, progresses, and interacts with the immune system. Read [more...](#)



Resource: [NCCRT Steps Guide](#), pg. 6

2018 MEDICARE STUDY

Average annual treatment cost per patient with a primary diagnosis of CRC:

- Stage I - \$32,000
- Stage II - \$45,000
- Stage IV - \$64,000
- Mean spending for the terminal year across all stages - \$74,000

SAVE THE DATES

2023 Annual Meetings

<p>NORTH DAKOTA CANCER COALITION Planning for a cancer-free future</p> <p>Tuesday May 16, 2023 1:00-4:30 p.m.</p>	<p>NORTH DAKOTA COLORECTAL CANCER ROUNDTABLE</p> <p>Wednesday May 17, 2023 8:30 a.m.-12:00 p.m.</p>
<p>Both events will be held in the Pioneer Room at the State Capitol, Bismarck, ND</p>	

Screend Contacts

Nikki Medalen, MS, BSN
Quality Improvement Specialist
nmedalen@qualityhealthnd.org
701.989.6236

Carolyn Tuft
Quality Improvement Specialist
ctuft@qualityhealthnd.org
701.989.6238

Jon Gardner
Network Administrator
jgardner@qualityhealthnd.org
701.989.6237



Quality Health Associates
of North Dakota

41 36th Avenue NW | Minot, ND 58703
www.screend.org